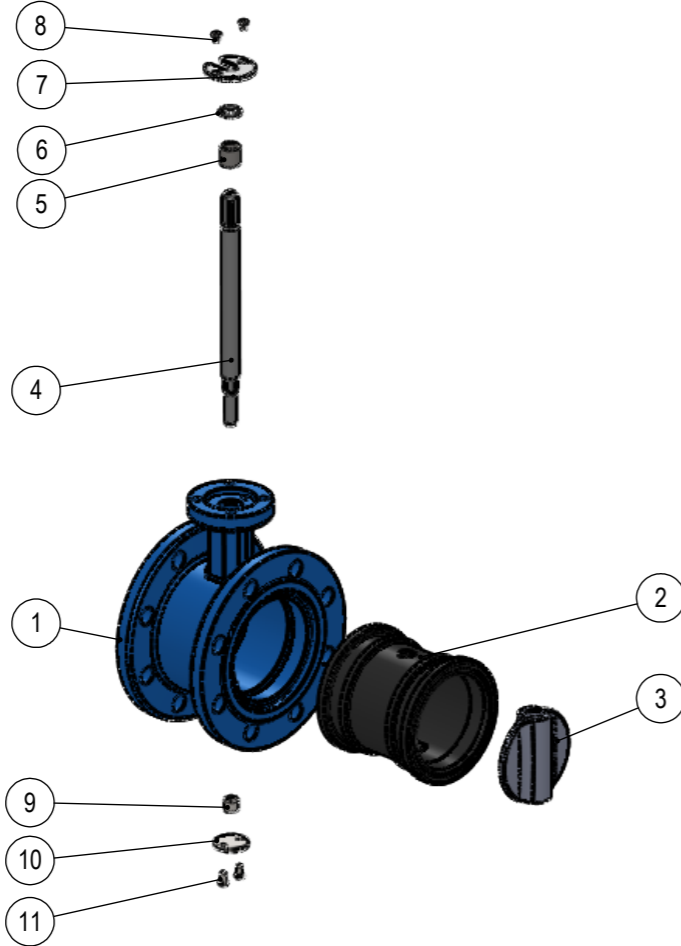


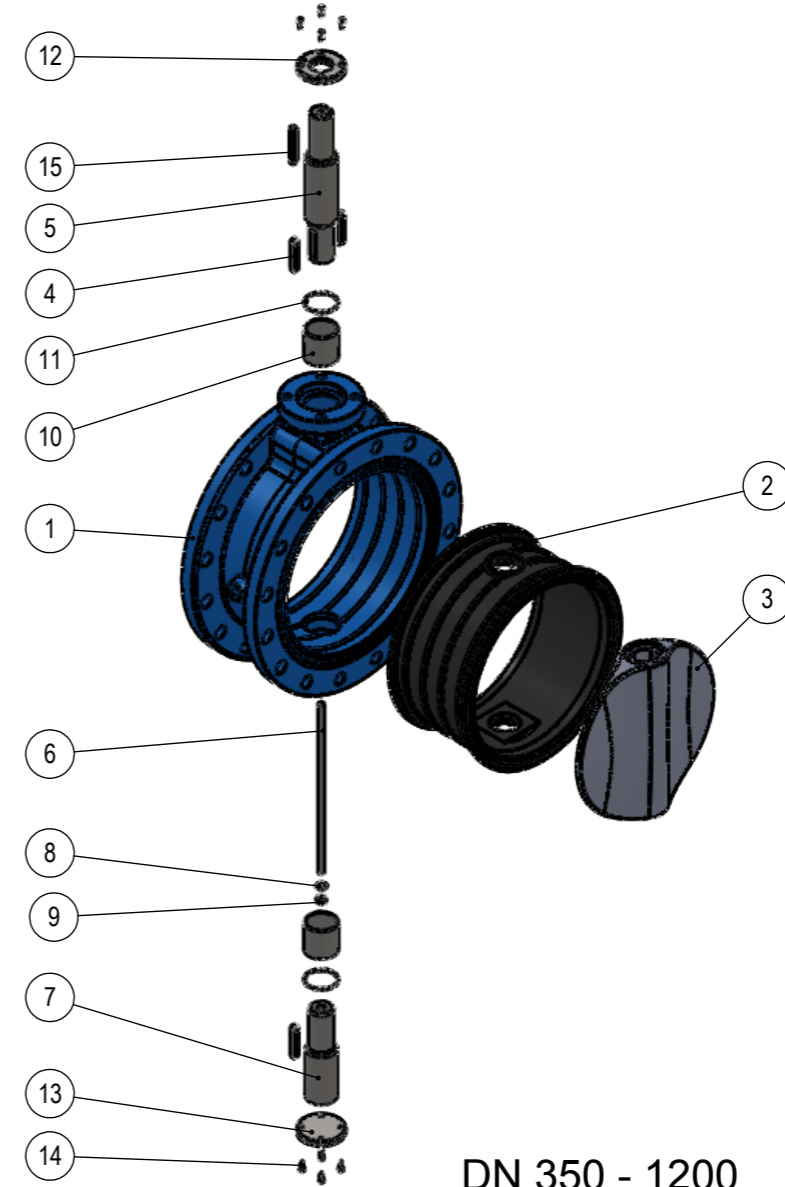
AV[®] 1160

ÇİFT FLANŞLI KELEBEK VANA PARÇA LİSTESİ



DN 80 - 300

P.NO	PARÇA ADI	MALZEME CİNSİ
1	Gövde	GGG 40-50, GGG 40.3, Al-Bz AISI 316, A216 WCB
2	Gövde siti	EPDM, NBR, Viton, Hypalon Neopren, NR, Silikon
3	Klepe	AISI 316, Al-Bz, GGG 40-50, 1.4462, 1.4057, A216 WCB
4	Mil	AISI 304, AISI 316, AISI 420, 1.4057, 1.4462
5	Burç	SB (Karbon Çelik + PTFE)
6	O-Ring	NBR
7	Pul	St-37, A-2
8	Civata	8.8, A-2
9	Burç	SB (Karbon Çelik + PTFE)
10	Alt kapak	St-37
11	Civata	8.8, A-2



DN 350 - 1200

P.NO	PARÇA ADI	MALZEME CİNSİ
1	Gövde	GGG 40-50, GGG 40.3, Al Bz, AISI 316, A216 WCB
2	Gövde siti	EPDM, NBR, Viton, Hypalon, NR, Silikon
3	Klepe	AISI 316, Al-Bz, GGG 40-50, 1.4462, 1.4057, A216 WCB
4	Kama	C 45 k
5	Üst mil	AISI 304, AISI 316, AISI 420, 1.4057, 1.4462
6	Ara mil	AISI 304, AISI 316, AISI 420, 1.4057, 1.4462
7	Alt mil	AISI 304, AISI 316, AISI 420, 1.4057, 1.4462
8	Pul	St-37, A-2
9	Somun	6.8, A-2
10	Burç	SB (Karbon Çelik + PTFE)
11	O-ring	EPDM, NBR
12	Üst kapak	C 45
13	Alt kapak	C 45
14	Civata	8.8, A-2
15	Kama	C 45 k