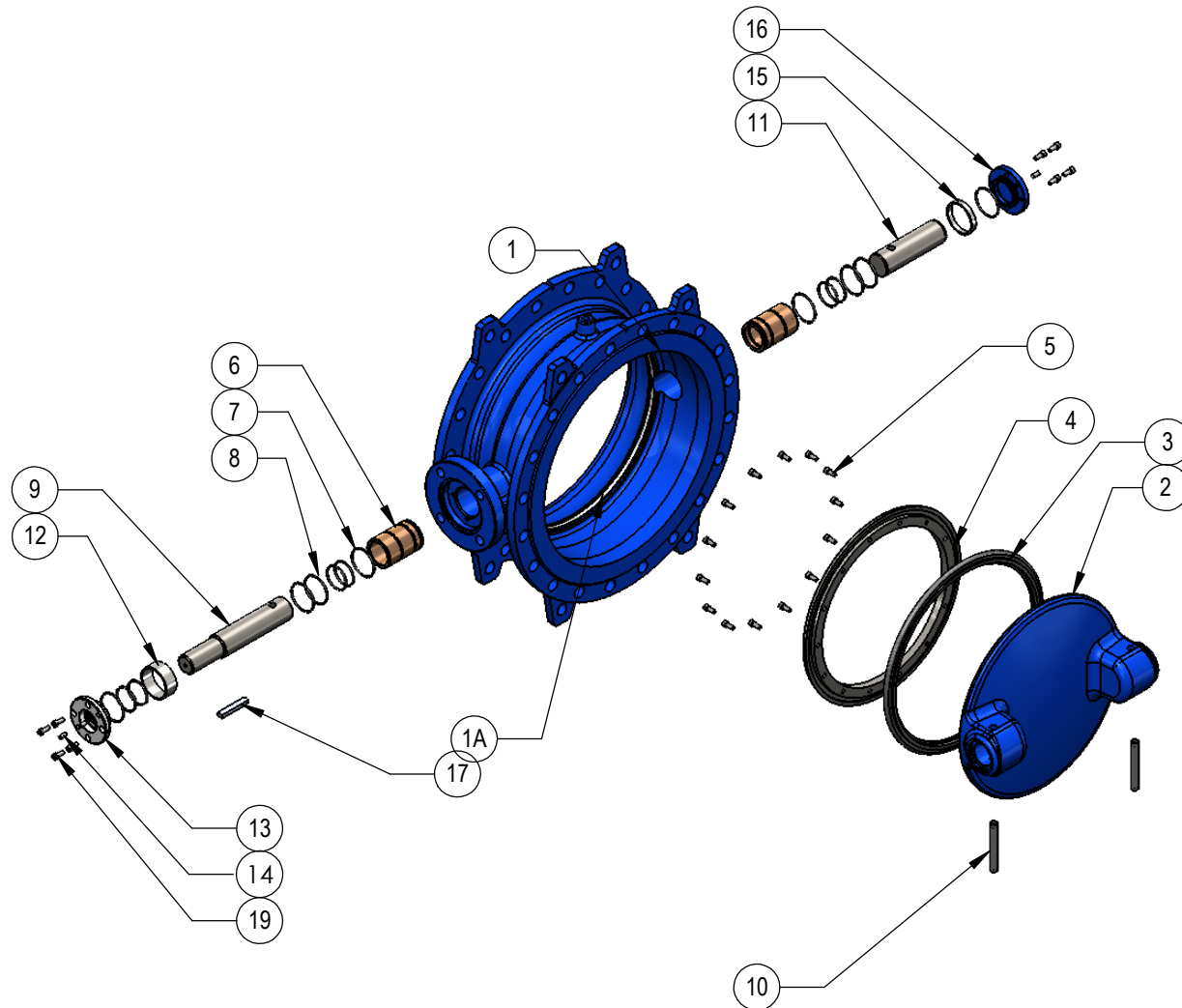


# 2160

## BUTTERFLY VALVE PARTS LIST



Ø 150-1200  
Parts List & Material Specification

1	Body	GGG 40-50
1A	Body Seat	Stainless Steel With Welding
2	Disc	GGG 40-50
3	Disc Seat	EPDM
4	Retaining Ring	St-37, AISI 304, AISI 316
5	Bolt	A2
6	Front-Back Bushing	Bronze
7	O-ring	NBR, EPDM
8	O-ring	NBR, EPDM
9	Front Shaft	1.4021, 1.4057
10	Pin	1.4021, 1.4057
11	Back Shaft	1.4021, 1.4057
12	Adjustment Bushing	Delrin, Steel
13	Front Cover	St-37, GGG 40
14	setscrew	8.8 Galvanized Steel
15	Adjustment Bushing	Delrin, Steel
16	Back Cover	St-37, GGG 40
17	Key	C 45 K
18	Eye Bolt	A 105
19	Bolt	8.8