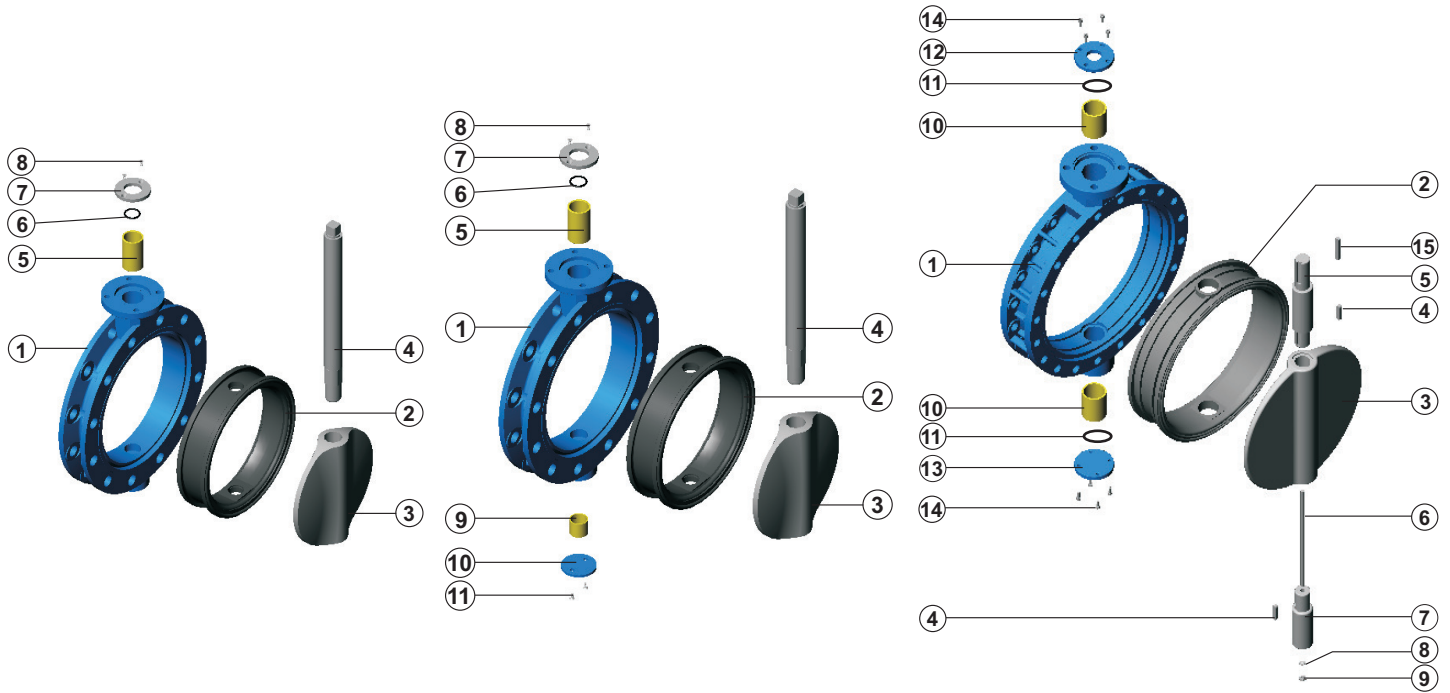




1170

DOUBLE FLANGED BUTTERFLY VALVE PARTS LIST



Parts List & Material Specification

Ø100-200

Ø250-300

Ø350-1800

P.NO	PART NAME	MATERIAL
1	Body	GGG 40-50, GGG 40.3, Al-Bz AISI 316, GS-C25
2	Body seat	EPDM, NBR, Viton, Hypalon Neopren, NR, Silicone
3	Disc	AISI 316, Al-Bz, GGG 40-50, GS-C25, UB 6
4	Stem	AISI 304, AISI 316, AISI 420
5	Bearing	SB (Carbon Steel + PTFE)
6	O-Ring	NBR
7	Washer	St-37, A-2
8	Bolt	8.8, A-2

P.NO	PART NAME	MATERIAL
1	Body	GGG 40-50, GGG 40.3, Al-Bz AISI 316, GS-C25
2	Body seat	EPDM, NBR, Viton, Hypalon Neopren, NR, Silicone
3	Disc	AISI 316, Al-Bz, GGG 40-50, GS-C25, UB 6
4	Stem	AISI 304, AISI 316, AISI 420
5	Bearing	SB (Carbon Steel + PTFE)
6	O-Ring	NBR
7	Washer	St-37, A-2
8	Bolt	8.8, A-2
9	Bearing	SB (Carbon Steel + PTFE)
10	Lower Cover	St-37
11	Bolt	8.8, A-2

P.NO	PART NAME	MATERIAL
1	Body	GGG 40-50, GGG 40.3, Al-Bz, AISI 316, GS-C25
2	Body seat	EPDM, NBR, Viton, Hypalon, Neopren, NR, Silicone
3	Disc	AISI 316, Al-Bz, GGG 40-50, GS-C25, UB 6
4	Key	C 45 k
5	Upper stem	AISI 304, AISI 316, AISI 420
6	Connecting stud	AISI 304, AISI 316, AISI 420
7	Lower stem	AISI 304, AISI 316, AISI 420
8	Washer	St-37, A-2
9	Nut	6.8, A-2
10	Bearing	SB (Carbon Steel + PTFE)
11	O-ring	EPDM, NBR
12	Upper cover	C 45
13	Lower cover	C 45
14	Bolt	8.8, A-2
15	Key	C 45 k

Subject to change without notice.
Please contact us for other sizes and materials.

REV : G

02.11.2015