

Subject to change without notice,
Please contact us for other sizes and materials.

REV : A3

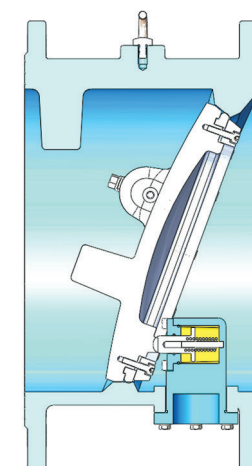
20.03.2012

Part List & Material Specification

Ø200-1200

P.NO	PART NAME	MATERIAL
1	Body	GGG 40-50
1A	Body Seat	Stainless Steel With Welding
2	Disc	GGG 40-50
3	Disc Seat	NBR, EPDM
4	Retaining Ring	St 37, AISI 304, AISI 316
5	Bolt	A2
6	Bolt	A2
7	Front Shaft	1.4021
8	Front - Back Bushing	Bronze
9	O-ring	NBR
10	O-ring	NBR
11	Shaft	C 1050
12	Front Cover	St 37
13	Position Indicator	C 1050
14	Bolt	A2
15	Back Shaft	1.4021

P.NO	PART NAME	MATERIAL
16	O-ring	NBR
17	Back Cover	St 37
18	Bolt	8.8
19	Hydraulic Brake	C 1050 (optional)
20	O-ring	NBR
21	Bolt	8.8
22	Bushing	C 1050
23	Spring Steel	A2
24	Shaft	St 37
25	O-ring	NBR
26	Pusher	C 1050
27	Cover	St 37
28	Bolt	A2
29	Eye Bolt	A 105
30	Setscrew	A2



(Damper Working System)



4020 SLANTED SEAT CHECK VALVE

Type 4020 slanted seat check valve is a flanged, double eccentric valve. It supplies full leakage tightness with elastomer seated design. Actuation can be made with the internal damper unit. No lever and counterweight is required.

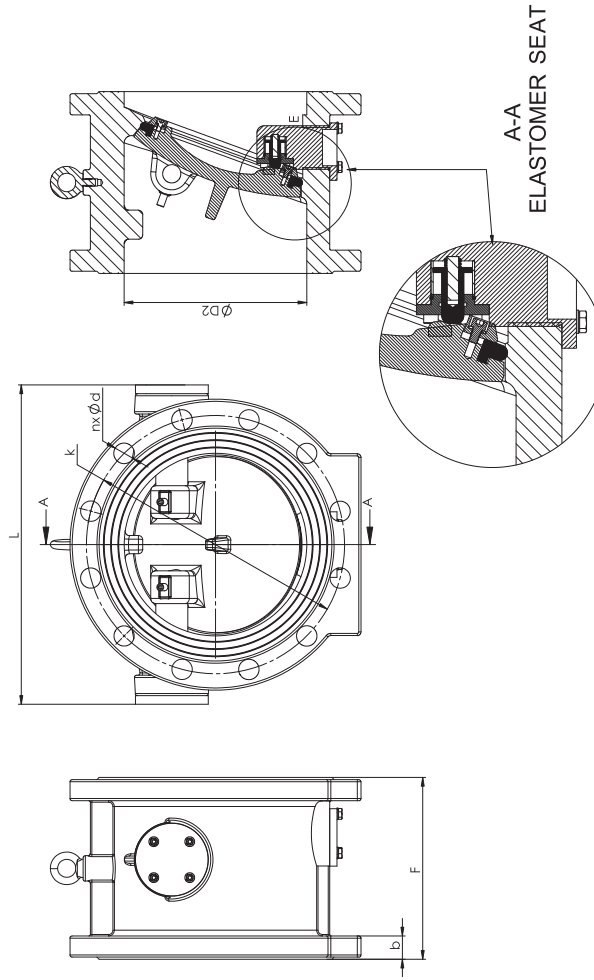
Asteknik Valve Type :	4020
Valve Type	: Check valve
DN/NPS	: DN 200 - DN 1200 8" - 48"
Working Pressure	: PN 10, PN 16
Flange Connection	: PN 10, PN 16, PN 25
Top Flange	: ISO 5211
Marking	: EN 19
Face-to-Face	: EN 558-1/14
Test Standard	: EN 12266-1

Please contact us for other sizes, pressures and flange connections.

ASTEKNİK® 4020S

Slanted seat check valve dimensional drawing

Ø 200 - 1200



DN	PN - 10 Flange					PN - 16 Flange					BODY	
	b	ØD	ØD2	Øk	n	b	ØD	ØD2	Øk	n	L	F
200	20	340	200	295	8	20	340	200	295	12	324	230
250	22	395	250	350	12	22	405	250	355	12	388	250
300	24.5	445	300	400	12	24.5	460	300	410	12	420	270
350	24.5	505	350	460	16	26.5	520	350	470	16	490	290
400	24.5	565	400	515	16	28	580	400	525	16	578	310
450	25.5	615	450	565	20	30	640	450	585	20	624	330
500	26.5	670	500	620	20	31.5	715	500	650	20	677	350
600	30	780	600	725	20	36	840	600	770	20	828	390
700	32.5	895	700	840	24	39.5	910	700	840	24	890	430
800	35	1015	800	950	24	43	1025	800	950	24	920	470
900	37.5	1115	900	1050	28	46.5	1125	900	1050	28	1200	510
1000	40	1230	1000	1160	28	50	1255	1000	1170	28	1320	550
1200	45	1455	1200	1380	32	57	1485	1200	1390	32	1585	630