

Subject to change without notice,  
Please contact us for other sizes and materials.

REV : G

17.03.2014

## Parts List & Material Specification

### Ø 40 - 200

P.NO	PART NAME	MATERIAL
1	Body	GG 25, GGG 40-50, GGG 40.3, Al-Bz AISI 316, GS-C25
2	Body seat	EPDM, NBR, Viton, Hypalon Neopren, NR, Silicone
3	Disc	AISI 316, Al-Bz, GGG 40-50, GS-C25, UB 6
4	Stem	AISI 304, AISI 316, AISI 420
5	Bearing	SB (Carbon Steel + PTFE)
6	O-Ring	NBR
7	Washer	St-37, A-2
8	Bolt	8.8, A-2

### Ø 250 - 300

P.NO	PART NAME	MATERIAL
1	Body	GG 25, GGG 40-50, GGG 40.3, Al-Bz AISI 316, GS-C25
2	Body seat	EPDM, NBR, Viton, Hypalon Neopren, NR, Silicone
3	Disc	AISI 316, Al-Bz, GGG 40-50, GS-C25, UB 6
4	Stem	AISI 304, AISI 316, AISI 420
5	Bearing	SB (Carbon Steel + PTFE)
6	O-Ring	NBR
7	Washer	St-37, A-2
8	Bolt	8.8, A-2
9	Bearing	SB (Carbon Steel + PTFE)
10	Lower Cover	St-37
11	Bolt	8.8, A-2

### Ø 350 - 800

P.NO	PART NAME	MATERIAL
1	Body	GG 25, GGG 40-50, GGG 40.3, Al-Bz, AISI 316, GS-C25
2	Body seat	EPDM, NBR, Viton, Hypalon, Neopren, NR, Silicone
3	Disc	AISI 316, Al-Bz, GGG 40-50, GS-C25, UB 6
4	Key	C 45 k
5	Upper stem	AISI 304, AISI 316, AISI 420
6	Connecting stud	AISI 304, AISI 316, AISI 420
7	Lower stem	AISI 304, AISI 316, AISI 420
8	Washer	St-37, A-2
9	Nut	6.8, A-2
10	Bearing	SB (Carbon Steel + PTFE)
11	O-ring	EPDM, NBR
12	Upper cover	C 45
13	Lower cover	C 45
14	Bolt	8.8, A-2
15	Key	C 45 k



## 1140 LUG TYPE BUTTERFLY VALVE

1140 Lug Type threaded holes butterfly valve is used in all general purpose operations also can be used as a stopper and tap for discharging at the ends of pipe lines. As a difference from wafer type (1120) butterfly valve, it provides installation convenience to the line or easy uninstallation of the line behind the valve with its threaded lugs.

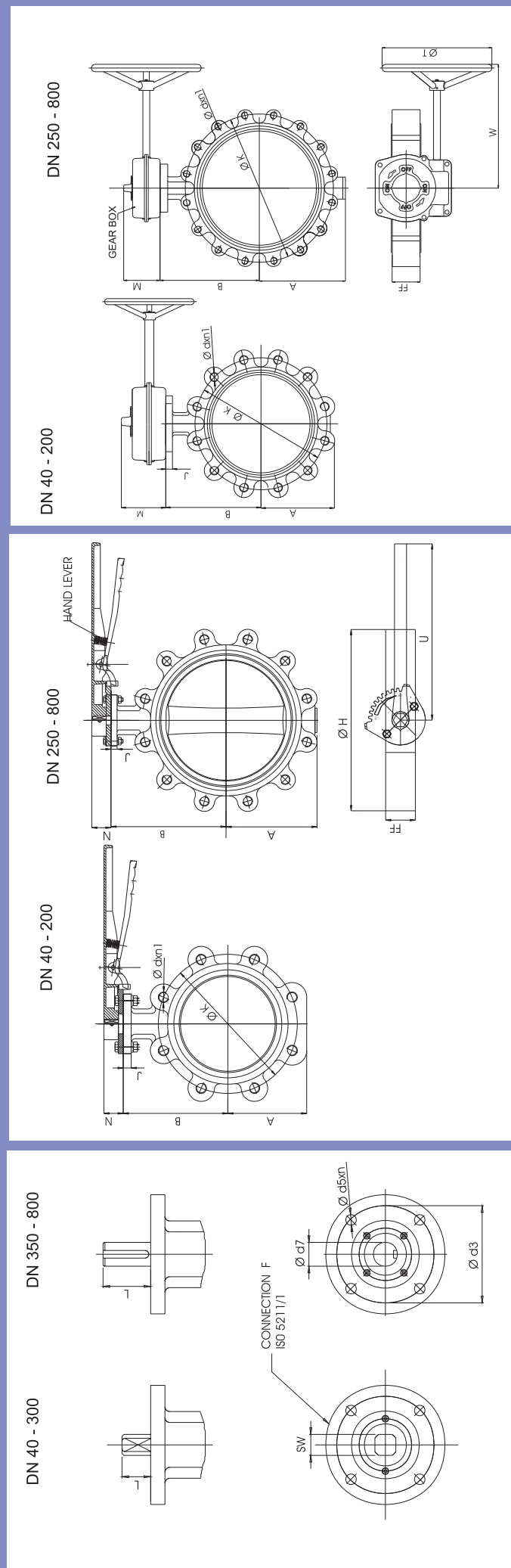
**Asteknik Valve Type : 1140**  
**Valve Type** : Lug Type (Threaded Holes) Butterfly Valve  
**DN/ANSI** : DN 40 - DN 800 1½" - 32"  
**Working Pressure** : PN 6, PN 10  
**Flange Connection** : PN 6, PN 10, PN 16, PN 25, CL 150  
**Top Flange** : ISO 5211  
**Marking** : EN 19  
**Face-to-Face** : EN 558-1/20  
**Test Standard** : EN 12266-1

Please contact us for other sizes, pressures and flange connections.

## Lug type (threaded) butterfly valve dimensional drawing



# 1140



DN	A	B	FF	Ø H	J	M	N	U	W	Ø T	F	Ød5xN	□ SW Ø d7	L	Ø d3	PN 10			PN 16			FREE SHAFT Weight (kg)	HAND LEVER		PN 10		GEAR BOX		PN 16
																Ø K	Ø d	n1	Ø K	Ø d	n1		Type	Weight (kg)	Type	Weight (kg)			
Ø 40	61	96	40	118	13	50	37	220	159	200	05	7x4	□ 9	20	50	110	M 16	4	110	M 16	4	3.5	92-150		AST-20				
Ø 50	67	108	43	130	13	50	37	220	159	200	05	7x4	□ 9	20	50	125	M 16	4	125	M 16	4	4.0	92-150	0.600	AST-20				
Ø 65	75	127	46	154	13	50	37	220	159	200	07	9x4	□ 11	20	70	145	M 16	4	145	M 16	4	5.0	92-150		AST-20				
Ø 80	96	132	46	188	14	50	37	260	159	200	07	9x4	□ 14	20	70	160	M 16	8	160	M 16	8	6.0	92-200		AST-20			2,900	
Ø 100	111	155	52	218	14	50	37	260	159	200	07	9x4	□ 14	20	70	180	M 16	8	180	M 16	8	9.0	92-200	0.800	AST-20				
Ø 125	123	158	56	234	14	50	37	260	159	200	07	9x4	□ 14	20	70	210	M 16	8	210	M 16	8	11.0	92-200		AST-20				
Ø 150	134	185	56	268	14	50	37	350	159	200	07	9x4	□ 17	22	70	240	M 20	8	240	M 20	8	12.0	92-300	0.900	AST-20				
Ø 200	164	213	60	317	15	50	37	350	159	200	07	9x4	□ 17	22	70	295	M 20	8	295	M 20	8	20.0	92-300		AST-20				
Ø 250	202	245	68	393	15	75	47	400	238	260	10	11x4	□ 22	32	102	350	M 20	12	355	M 24	12	30.0	92-400	2.600	AST-30			8,220	
Ø 300	239	282	78	446	15	75	47	400	238	260	10	11x4	□ 27	32	102	400	M 20	12	410	M 24	12	40.0	92-400		AST-30				
Ø 350	300	318	78 / 92	513	28	102	-	-	315	400	14	17.5x4	Ø 36	75	140	460	M 20	16	470	M 24	16	66.0	-	-	AST-40		12,240	12,240	
Ø 400	326	362	102	570	28	102	-	-	315	400	14	17.5x4	Ø 36	75	140	515	M 24	16	525	M 27	16	81.0	-	-	AST-40		17,900	17,900	
Ø 450	364	410	114	632	26	102	-	-	315	400	16	22x4	Ø 45	92	165	565	M 24	20	585	M 27	20	111.0	-	-	AST-60		32,660	32,660	
Ø 500	408	435	127	667	26	102	-	-	315	550	16	22x4	Ø 45	92	165	620	M 24	20	650	M 30	20	148.0	-	-	AST-80		45,000	45,000	
Ø 600	482	519	154	768	26	102	-	-	315	600	16	22x4	Ø 60	92	165	725	M 27	20	770	M 33	20	225.0	-	-	AST-80	AB1950NHR	70,000	70,000	
Ø 700	543	548	165	900	30	135	-	-	414	700	25	18x8	Ø 68	118	254	840	M 27	24	840	M 33	24	323	-	-	AB1950NHR	AB6800NLT/SP4	70,000	70,000	
Ø 800	587	587	180 / 190	1016	30	135	-	-	414	800	25	18x8	Ø 80	118	254	950	M 30	24	950	M 36	24	413	-	-	AB6800NLT/SP4	AB6800NLT/SP4	70,000	70,000	

Subject to change without notice.  
Please contact us for other sizes.

www.asteknikvana.com

elmak@asteknikvana.com

REV : N

22.04.2014