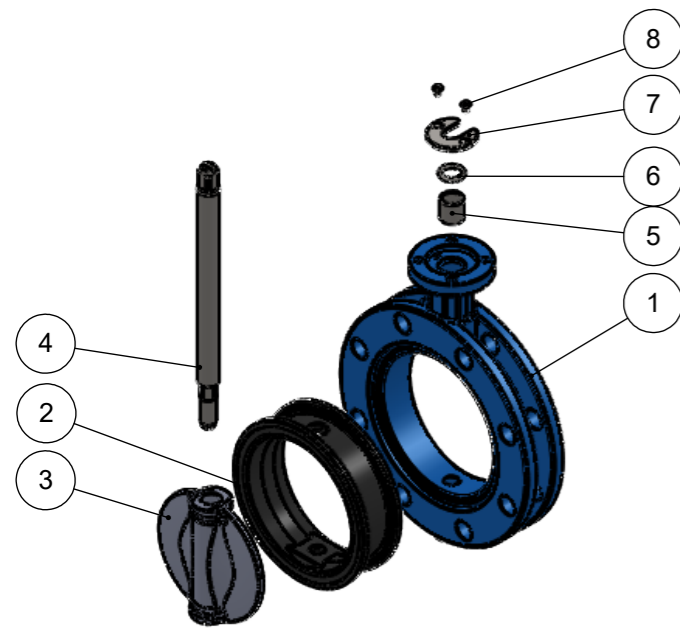
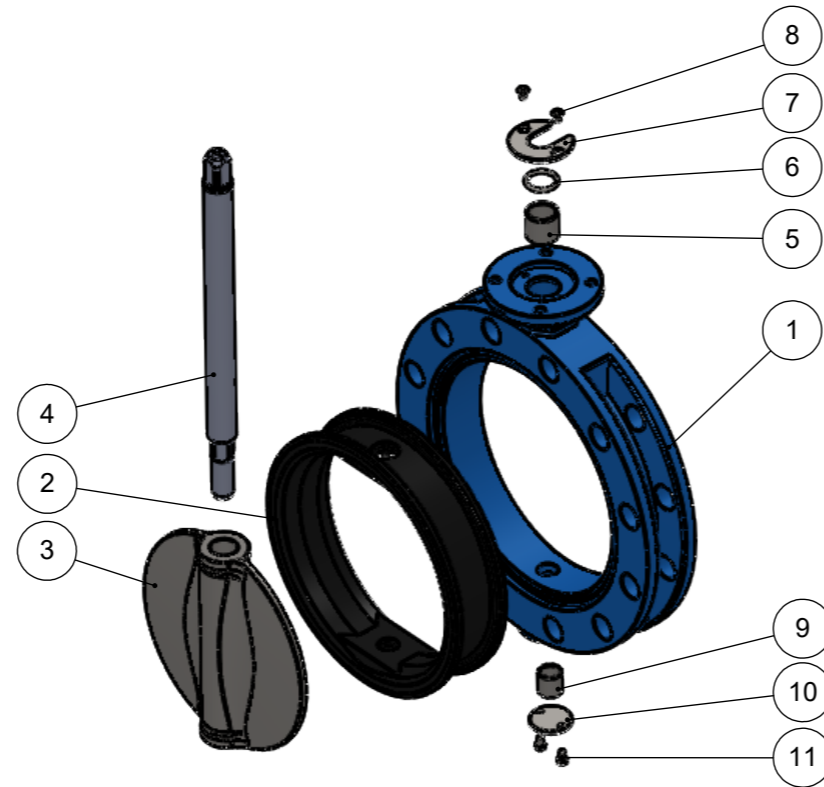


# AV<sup>®</sup> ASTEKNIK 1170 DOUBLE FLANGED BUTTERFLY VALVE PART LIST



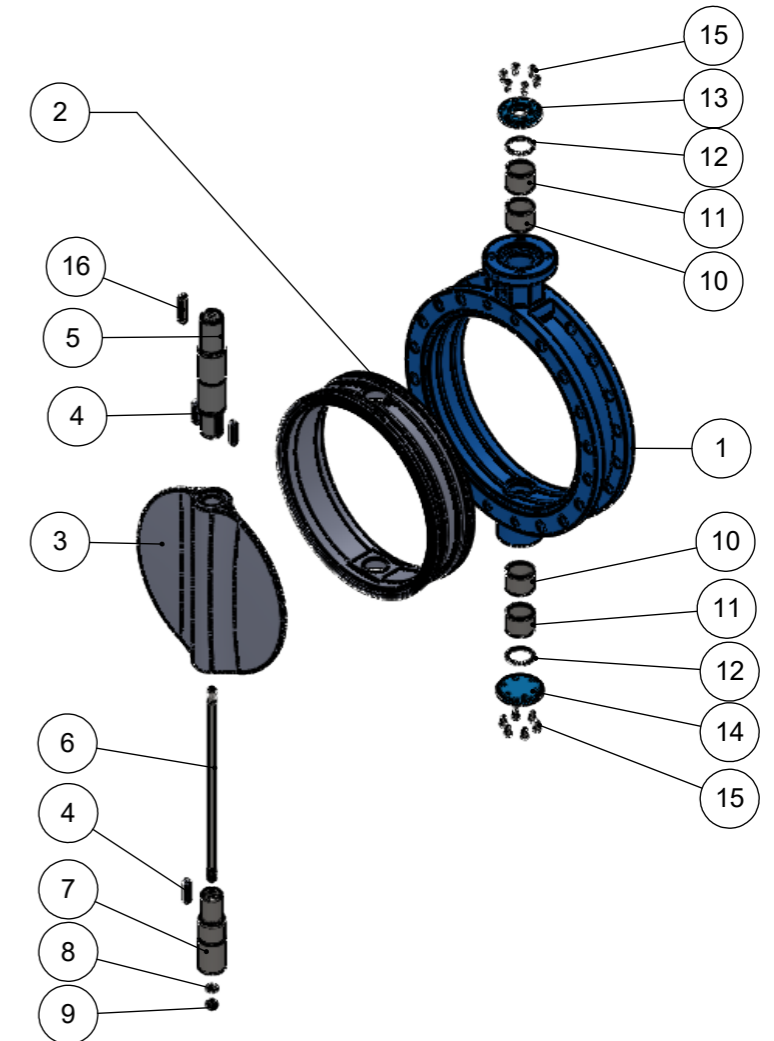
Ø100-200

P. NO	PART NAME	MATERIAL
1	Body	GGG 50, GGG 40.3, Al-Bz, AISI 316, WCB
2	Body Seat	EPDM, NBR, Viton, Neoprene, NR, Silicone
3	Disc	AISI 316, Al-Bz, GGG 50, 1.4462
4	Stem	1.4021, 1.4462
5	Bearing	SB (Carbon Steel + PTFE)
6	O-ring	EPDM, NBR
7	Washer	St-37, A-2
8	Bolt	8.8 Elektro galvanized, A-2



Ø250-300

P. NO	PART NAME	MATERIAL
1	Body	GGG 50, GGG 40.3, Al-Bz, AISI 316, WCB
2	Body Seat	EPDM, NBR, Viton, Neoprene, NR, Silicone
3	Disc	AISI 316, Al-Bz, GGG 50, 1.4462
4	Stem	1.4021, 1.4462
5	Bearing	SB (Carbon Steel + PTFE)
6	O-ring	EPDM, NBR
7	Washer	St-37, A-2
8	Bolt	8.8 Elektro galvanized, A-2
9	Bearing	SB (Carbon Steel + PTFE)
10	Lower cover	St-37
11	Bolt	8.8 Elektro galvanized, A-2



Ø350-1800

P. NO	PART NAME	MATERIAL
1	Body	GGG 50, GGG 40.3, Al-Bz, AISI 316, WCB
2	Body Seat	EPDM, NBR, Viton, Neoprene, NR, Silicone
3	Disc	1.4308, 1.4408
4	Key	C 45 k
5	Upper Stem	1.4021, 1.4462
6	Connecting Stud	1.4021, 1.4462
7	Lower Stem	1.4462
8	Washer	A-2
9	Nut	A-2
10	Bearing	SB (Carbon Steel + PTFE)
11	Bearing	SB (Carbon Steel + PTFE)
12	O-ring	EPDM, NBR
13	Upper Cover	C 45
14	Lower cover	C 45
15	Bolt	8.8 Elektro galvanized, A-2
15	Key	C 45 K