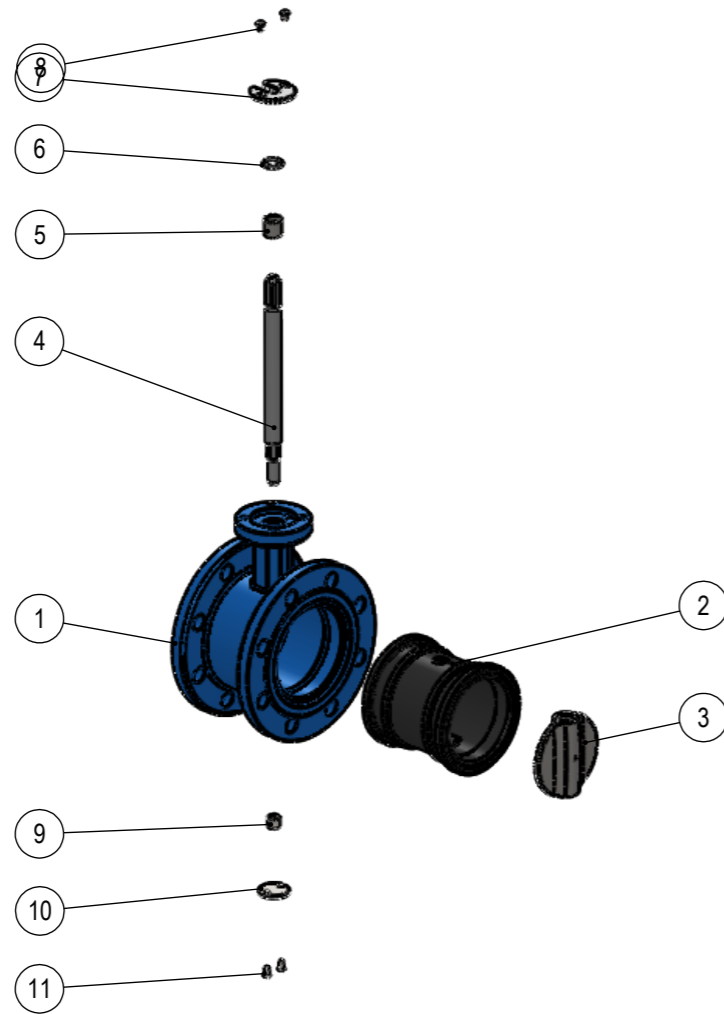
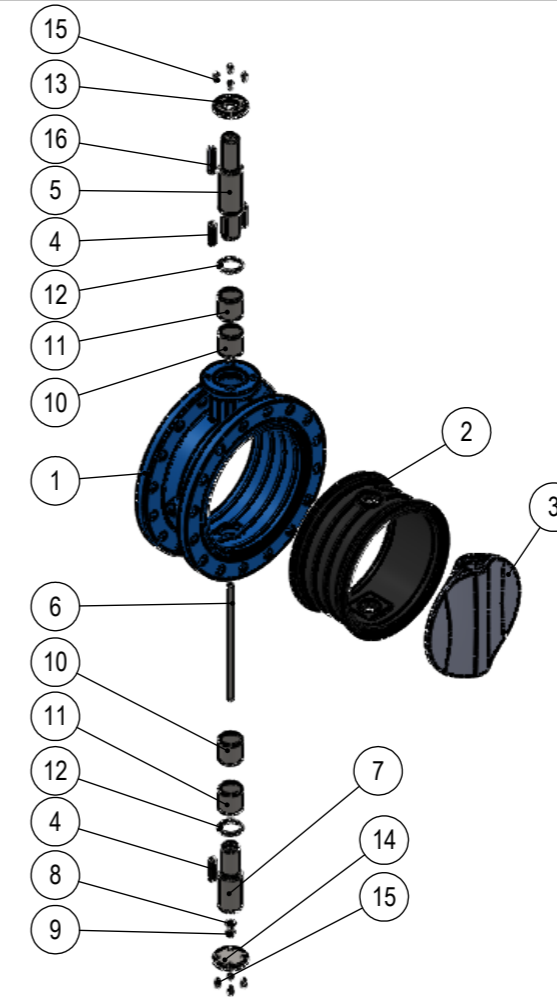


AV[®] ASTEKNIK 1160 DOUBLE FLANGED BUTTERFLY VALVE PARTS LIST



DN 80 - 300

P. NO	PART NAME	MATERIAL
1	Body	GGG 50, GGG 40.3, Al-Bz, AISI 316, WCB
2	Body seat	EPDM, NBR, Viton, Neoprene, Nr, Silicone
3	Disc	AISI 316, Al-Bz, GGG 50, 1.4462, 1.4057
4	Stem	1.4021, 1.4057, 1.4462
5	Bearing	SB (Carbon Steel+PTFE)
6	O-Ring	NBR
7	Washer	St-37, A-2
8	Bolt	8.8 Electrogalvanized, A-2
9	Bearing	SB (Carbon Steel + PTFE)
10	Lower Cover	St-37
11	Bolt	8.8 Electrogalvanized, A-2



DN 350 - 1200

P. NO	PART NAME	MATERIAL
1	Body	GGG 50, GGG 40.3, Al-Bz, AISI 316, WCB
2	Body seat	EPDM, NBR, Viton, Neoprene, NR, Silicone
3	Disc	AISI 316, Al-Bz, GGG 50, 1.4462, 1.4057
4	Key	C 45 k
5	Upper stem	1.4021, 1.4057, 1.4462
6	Connecting stud	1.4021, 1.4057, 1.4462
7	Lower stem	1.4021, 1.4057, 1.4462
8	Washer	A-2
9	Nut	A-2
10	Bearing	SB (Carbon Steel + PTFE)
11	Bearing	SB (Carbon Steel + PTFE)
12	O-ring	EPDM, NBR
13	Upper cover	C 45
14	Lower cover	C 45
15	Bolt	8.8, A-2
16	Key	C 45 k